

2019 NAUTILUS
Vehicle Content



[Accessible Nautilus Brochure PDF](#)





THE LINCOLN WAY

LINCOLN

PICKUP & DELIVERY

When it's time for service, you can simply schedule a Lincoln Pickup & Delivery™ appointment with the Lincoln Way™ app¹ or by phone. We'll handle the rest. We'll pick up your vehicle and deliver it back to you when service is complete.² In between, we'll provide a complimentary Lincoln loaner – so your time remains distinctly yours. Plus, we'll return your Lincoln washed and ready for your next journey.

LINCOLN & CLEAR

Together, we're helping you put travel stress on standby. CLEAR® biometric technology allows members to bypass security lines at 30+ of the busiest airports and sports stadiums across the nation, getting them through security in about 5 minutes or less. As a 2019 Lincoln Nautilus owner, you and your spouse or significant other can enjoy a 6-month complimentary CLEAR membership.³ Take your first step around the line by redeeming your Lincoln benefits with CLEAR.

LINCOLN WAY APP

Downloading the Lincoln Way app¹ to your mobile device makes it easy to connect with us. The app lets you schedule Lincoln Pickup & Delivery, find fuel and compare prices, and even find, reserve and pre-pay for parking in select cities. Use it to contact a Lincoln Concierge, securely manage your Lincoln Automotive Financial Services account, and more. Lincoln Connect™⁴ also works with the app to let you locate your vehicle, start it, and lock or unlock its doors from virtually anywhere. Combine it with the app and the Lincoln Way Alexa Skill⁵ to remotely start your vehicle, and more, simply by speaking to your Amazon Alexa enabled device.

LINCOLN CONCIERGE

You have a personal connection to the latest information about Lincoln vehicles, services and ownership benefits. Simply choose how you'd like to connect, and a highly trained Lincoln Concierge team member will help you explore Lincoln in the way that suits you best. Chat online at Lincoln.com. Reach us through the Lincoln Way app¹ Or call (800) 521-4140, anytime of the day or night.

¹Available via download and compatible with select smartphone platforms. Learn more at lincolnway.com. Message and data rates may apply. ²Lincoln Pickup & Delivery is valid for owners of 2017 or newer model-year Lincoln vehicles. Service available for retail and warranty repairs. Mileage limitations may apply. See dealer for details. ³CLEAR is currently available to U.S. citizens and legal permanent residents with valid photo I.D. CLEAR Program eligibility for new retail purchases of 2018 and newer model-year Lincoln vehicles (12 months on Lincoln Black Label models; 6 months on all other Lincoln models). Full CLEAR enrollment, including biometrics, required to be completed within 120 days of vehicle delivery. ⁴See footnote 2 on next page titled "Standard Features," and your Lincoln Dealer for details. ⁵Certain Alexa functionality is dependent on smart phone and home technology. Comparisons based on competitive models (class is Luxury Midsize Utilities under \$57,000 based on Lincoln segmentation), publicly available information and Lincoln certification data at time of release. Vehicles may be shown with optional equipment. Features may be offered only in combination with other options or subject to additional ordering requirements/limitations. Dimensions shown may vary due to optional features and/or production variability. Information is provided on an "as is" basis and could include technical, typographical or other errors. Lincoln makes no warranties, representations, or guarantees of any kind, express or implied, including but not limited to, accuracy, currency, or completeness, the operation of the information, materials, content, availability, and products. Lincoln reserves the right to change product specifications, pricing and equipment at any time without incurring obligations. Your Lincoln Dealer is the best source of the most up-to-date information on Lincoln vehicles.



STANDARD FEATURES

POWER AND HANDLING

8-speed SelectShift® automatic transmission
Electric parking brake
Electric Power-Assisted Steering (EPAS)
Front-wheel drive (FWD)
Power disc brakes with Anti-Lock Brake System (ABS)
Torque Vectoring Control

DRIVER-ASSIST TECHNOLOGY

Lincoln Co-Pilot360™: auto high-beam headlamps, Blind Spot Detection with cross-traffic alert, Lane-Keeping System (includes lane-keeping assist, lane-keeping alert and Driver Alert), Pre-Collision Assist with Automatic Emergency Braking (AEB) (includes Pedestrian Detection, Forward Collision Warning, and Dynamic Brake Support), and rear view camera
Hill start assist
Post-Collision Braking
Reverse Sensing System
SYNC® 3 Enhanced Voice Recognition
Communications and Entertainment System with 8" LCD capacitive touchscreen, 911 Assist®, SYNC 3 AppLink®, Apple CarPlay™ compatibility, Android Auto™ compatibility, and 2 smart-charging USB ports

AUDIO

Lincoln Premium Sound System with AM/FM stereo/single-CD player, MP3 capability and 11 speakers including a subwoofer
SiriusXM® with 6-month All Access trial subscription¹

DRIVER CONTROLS

Auto Hold
Dual-zone electronic automatic temperature control
Lincoln Connect™ 4G LTE embedded modem with Wi-Fi hotspot capability (enables Lincoln Way™ app² features when activated)

EXTERIOR

Acoustic-laminate windshield and front-door glass
Dual chrome exhaust tips
Easy Fuel® capless fuel filler
Hands-free liftgate
LED headlamps with dynamic signature lighting
LED taillamps with LED backup lights
Power-adjustable, autofold, heated, body-color sideview mirrors with memory and integrated LED turn signal indicators
Rear view camera wash

INTERIOR

12V powerpoints (4)
12.3" LCD instrument cluster display
60/40 split-fold-flat rear seat with recline and EasyFold® seat back release
Active Noise Control
Comfort front seats with 10-way power adjustability and driver's side memory feature
Heated front seats
Leather-wrapped steering wheel
Power windows with one-touch-up/-down with global open/close for all 4 windows

LINCOLN EXPERIENCES

LED-illuminated exterior door handle pockets
Lincoln Approach Detection System
Lincoln logo illuminated welcome mats
Lincoln signature fade-on exterior lighting

SAFETY AND SECURITY

Personal Safety System™ for driver and front passenger with dual-stage front airbags³, safety belt pretensioners, safety belt energy-management retractors, safety belt usage sensors, driver's seat position sensor, crash severity sensor, restraint control module and Front-Passenger Sensing System
AdvanceTrac® with RSC® (Roll Stability Control™)
Driver's knee airbag³
Front-seat side airbags³
Glove-box-door-integrated knee airbag³
Intelligent Access with push-button start
MyKey® technology to help encourage responsible driving
Perimeter alarm
Safety Canopy® side-curtain airbags³
SecuriCode™ invisible keypad
SecuriLock® Passive Anti-Theft System
SOS Post-Crash Alert System™
Tire Pressure Monitoring System (excludes spare)

ENGINES

Turbocharged 2.0-liter I-4

with Auto Start-Stop Technology

250 hp @ **5,500** rpm⁴
280 lb.-ft. of torque @ **3,000** rpm⁴

EPA-estimated fuel economy ratings⁵

21 city/**26** hwy/**23** combined mpg

Standard: FWD

20 city/**25** hwy/**22** combined mpg

Optional: AWD

Twin-Turbocharged 2.7-liter V6

with Auto Start-Stop Technology

335 hp @ **5,500** rpm⁴
380 lb.-ft. of torque @ **3,250** rpm⁴

EPA-estimated fuel economy ratings⁵

20 city/**27** hwy/**22** combined mpg

FWD

19 city/**26** hwy/**21** combined mpg

AWD

**Optional: Nautilus Select
and Nautilus Reserve**



¹After your trial period ends, SiriusXM audio and data services each require a subscription sold separately, or as a package, by Sirius XM Radio Inc. See SiriusXM Customer Agreement for complete terms at www.siriusxm.com. All fees and programming subject to change. Trial subscriptions not available in AK and HI. ²Lincoln Connect includes complimentary 5-year subscription for remote features excluding Wi-Fi hotspot, and starts with vehicle sale date. Subscription is subject to compatible 4G network availability. Evolving technology/cellular networks may affect future functionality. Certain restrictions, 3rd-party terms, or message/data rates may apply. Wi-Fi hotspot includes complimentary wireless data trial that begins upon AT&T activation and expires at the end of 3 months or when 3GB of data is used, whichever comes first, but cannot extend beyond the complimentary subscription period for remote features. To activate, go to www.att.com/lincoln. Lincoln Way smartphone app, for use with Lincoln Connect, is available via download and compatible with select smartphone platforms. Lincoln Way is on the App Store® and Google Play™. Learn more at lincolnway.com. Message and data rates may apply. ³Always wear your safety belt and secure children in the rear seat. ⁴Horsepower and torque ratings achieved with 93-octane fuel. ⁵Actual mileage will vary.



TRIM SERIES

NAUTILUS

INCLUDES STANDARD FEATURES, PLUS:

- Lincoln Soft-Touch seating surfaces
- Manual-tilt/-telescoping steering column

OPTIONS

- 18" all-season snow-chain-compatible tires
- Engine block heater
- Intelligent all-wheel drive (AWD) includes AWD disconnect
- Lincoln Play with DVD (Rear-Seat Entertainment System with 2 pairs of wireless headphones)¹
- Satin roof-rack side rails
- Cargo Accessories and Mat Package:** floor liners, durable cargo area protector and rear bumper protector

NAUTILUS SELECT

INCLUDES CERTAIN NAUTILUS FEATURES, PLUS:

- Ambient lighting
- Auto-dimming driver's sideview mirror
- Bridge of Weir Deepsoft™ leather seating
- Enhanced Security Package:** secondary horn, lockable interior storage, vehicle inclination sensor, and enhanced valet mode
- Headlamp signature lighting light-up sequence
- Illuminated front door-sill scuff plates
- LED fog lamps
- Power-tilt/-telescoping steering column with memory
- Universal garage door opener
- Voice-Activated Touchscreen Navigation System with pinch-to-zoom capability, and integrated SiriusXM Traffic and Travel Link® with 6-year prepaid subscription²
- Wireless charging pad

OPTIONS

- Intelligent all-wheel drive (AWD) includes adaptive suspension and AWD disconnect
- Engine block heater
- Lincoln Play with DVD (Rear-Seat Entertainment System with 2 pairs of wireless headphones)¹
- Power panoramic Vista Roof® with power sunshade
- Revel® Audio System with 13 speakers; includes HD Radio™ Technology
- Satin roof-rack side rails
- Cargo Accessories and Mat Package**
- Cargo Utility Package:** Rear Cargo Management System, below-floor molded-plastic storage bins and spare tire cover, reversible cargo mat, 110V/150W AC power outlet, and interior cargo cover
- Class II Trailer Tow Package:** trailer sway control; 3,500 lbs. max (requires Cargo Utility Package)
- Climate Package:** heated rear outboard seats, heated steering wheel, rain-sensing windshield wipers, and windshield wiper de-icer

NAUTILUS RESERVE

INCLUDES CERTAIN SELECT FEATURES, PLUS:

- Adaptive suspension
- Dynamic LED signature lighting with cornering lamps
- Heated and ventilated front seats
- Heated rear outboard seats
- Heated steering wheel
- Power panoramic Vista Roof with power sunshade
- Rain-sensing windshield wipers
- Revel Audio System with 13 speakers; includes HD Radio Technology
- Windshield wiper de-icer

OPTIONS

- Intelligent all-wheel drive (AWD) includes AWD disconnect
- Engine block heater
- Lincoln Play with DVD (Rear-Seat Entertainment System with 2 pairs of wireless headphones)¹
- Satin roof-rack side rails
- Ultra Comfort front seats with 22-way power adjustability including thigh extenders and head restraints, plus Active Motion® massage functionality

Cargo Accessories and Mat Package

Cargo Utility Package

Class II Trailer Tow Package (requires Cargo Utility Package)

Driver Assistance Package: adaptive cruise control with stop-and-go and lane centering; adaptive steering; and evasive steering assist

Technology Package: 360-degree camera, enhanced active park assist, and Forward Sensing System

Ultimate Package: 21" premium painted ultra-bright machined aluminum wheels, full LED multi-projector headlamps, and Revel Ultima® Audio System with 19 speakers

LINCOLN ACCESSORIES

ELECTRONICS

- Bullfrog® portable Bluetooth® speakers¹
- NextBase® Duo Cinema¹
- Remote start systems
- Vehicle Security System

EXTERIOR

- Cargo basket¹
- Full vehicle cover¹
- Racks and carriers^{1,3}
- Rear bumper protector
- Side window deflectors¹
- Splash guards
- Sportz® tent¹
- Trailer towing accessories
- Wheel lock kits

INTERIOR

- Ash cup/coin holder
- Cargo area protector
- Cargo net
- Carpeted floor mats
- Custom UVS100® sunscreen¹
- First aid and roadside assistance kits¹
- Floor liners
- In-vehicle safe¹
- Interior cargo cover
- Soft cargo cooler bag
- Soft cargo organizers (large and standard sizes)
- Tablet cradle¹

Shop the complete collection at accessories.lincoln.com

DIMENSIONS

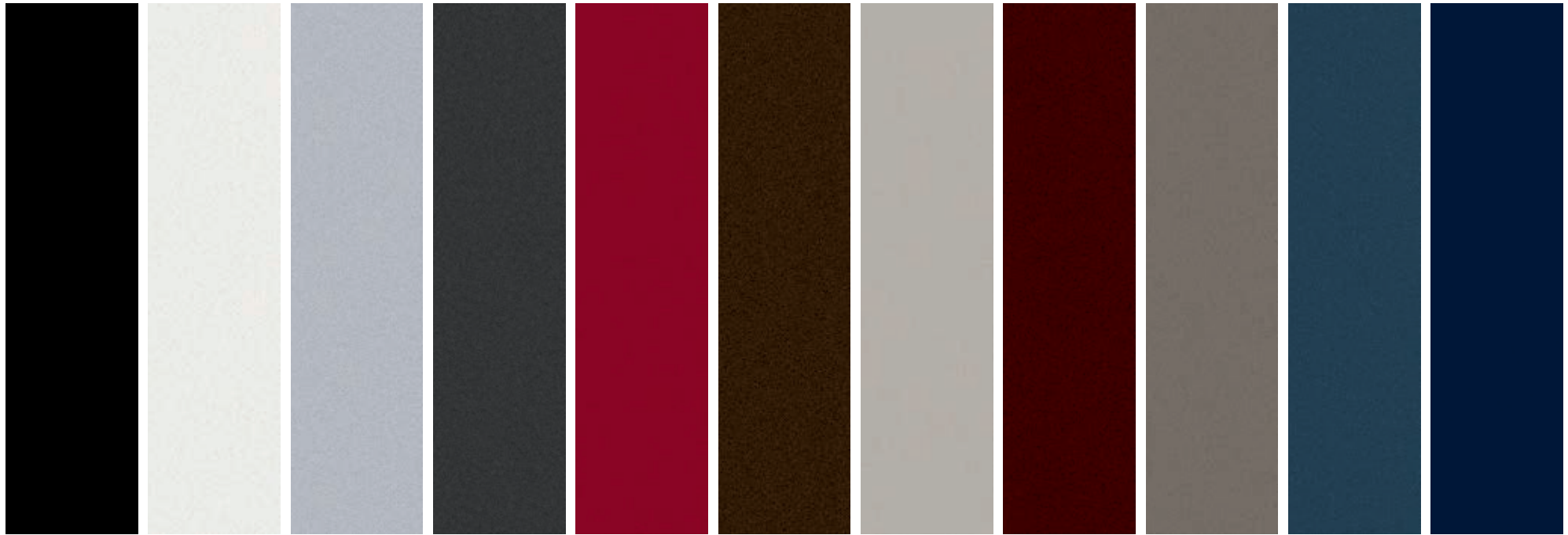
WHEELBASE	112.2"
LENGTH	190.0"
HEIGHT	66.2"
WIDTH	86.1" (including mirrors) 78.7" (mirrors folded)
HEAD ROOM	39.9" front/39.2" rear
LEG ROOM	42.8" (max.) front/39.6" rear
HIP ROOM	56.4" front/55.6" rear
SHOULDER ROOM	58.9" front/59.0" rear
CARGO VOLUME	68.8 cu. ft. behind front seats 37.2 cu. ft. behind rear seats
FUEL TANK	18.0 gal.

¹Lincoln Licensed Accessory. ²After your trial period ends, SiriusXM audio and data services each require a subscription sold separately, or as a package, by Sirius XM Radio Inc. See SiriusXM Customer Agreement for complete terms at www.siriusxm.com. All fees and programming subject to change. Trial subscriptions not available in AK and HI. ³Consult owner's manual for details on roof-rack limits.

Lincoln Original Accessories will be warranted for whichever provides you the greatest benefit: 24 months/unlimited mileage, or the remainder of your Bumper-to-Bumper 4-year/50,000-mile New Vehicle Limited Warranty. Lincoln Licensed Accessories (LLA) are warranted by the accessory manufacturer's warranty. LLA are designed and developed by the accessory manufacturer and have not been designed or tested to Ford Motor Company engineering requirements. Contact your Lincoln Dealer for details and/or a copy of all limited warranties. Amazon, Alexa and all related logos are trademarks of Amazon.com, Inc. or its affiliates. Android Auto, Google, Google Play and other marks are trademarks of Google Inc. Apple and Apple CarPlay are trademarks of Apple Inc., registered in the U.S. and other countries. App Store is a service mark of Apple Inc. Bridge of Weir is a trademark of Bridge of Weir Leather Company Limited. Bullfrog is a registered trademark of Stillwater Designs. "HD Radio" and the HD Radio logo are proprietary trademarks of iBiquity Digital Corporation. Revel, Ultima and the Revel logo are trademarks of HARMAN International Industries, registered in the United States and other countries. Sirius, XM, SiriusXM, and all related marks and logos are trademarks of Sirius XM Radio Inc. The Bluetooth word mark is a trademark of the Bluetooth SIG, Inc.

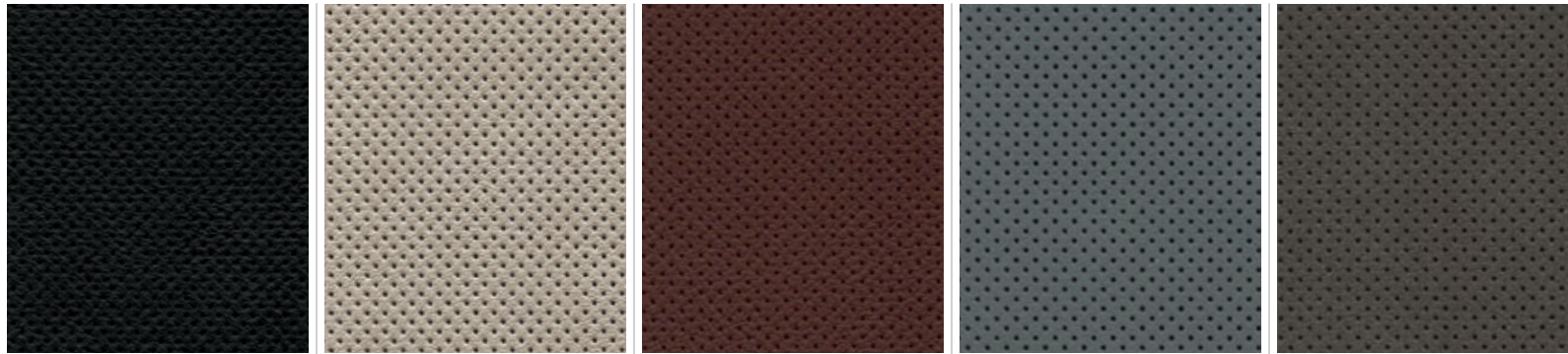


EXTERIOR FINISHES



1 Infinite Black Metallic
 2 White Platinum Metallic Tri-coat¹
 3 Ingot Silver Metallic
 4 Magnetic Gray Metallic
 5 Ruby Red Metallic Tinted Clearcoat¹
 6 Ochre Brown Metallic
 7 Ceramic Pearl Metallic Tri-coat¹
 8 Burgundy Velvet Metallic Tinted Clearcoat¹
 9 Iced Mocha Metallic¹
 10 Blue Diamond Metallic
 11 Rhapsody Blue¹

INTERIOR PALETTE



Ebony
 Brushed Aluminum, Brown Swirl Walnut, Sonata Spin Aluminum

Cappuccino
 Brushed Aluminum, Espresso Ash Swirl, Sonata Spin Aluminum

Terracotta
 Brown Swirl Walnut, Sonata Spin Aluminum

Medium Slate
 Gray Ash Swirl, Sonata Spin Aluminum

Coffee
 Espresso Ash Swirl, Sonata Spin Aluminum

INTERIOR	EXTERIOR
Ebony ²	
Brushed Aluminum	Nautilus 1-10
Brown Swirl Walnut	Select 1-10 Reserve 1-11
Sonata Spin Aluminum ³	Select 1-10 Reserve 1-11
Cappuccino ²	
Brushed Aluminum	Nautilus 1-10
Espresso Ash Swirl	Select 1-10 Reserve 1-11
Sonata Spin Aluminum ³	Select 1-10 Reserve 1-11
Terracotta	
Brown Swirl Walnut	Reserve 1-4
Sonata Spin Aluminum ³	Reserve 1-4
Medium Slate	
Gray Ash Swirl	Reserve 1-5, 10, 11
Sonata Spin Aluminum ³	Reserve 1-5, 10, 11
Coffee	
Espresso Ash Swirl	Select 1-10 Reserve 1-11
Sonata Spin Aluminum ³	Select 1-10 Reserve 1-11

Colors are representative only. ¹Additional charge. ²Lincoln Soft-Touch seating surfaces standard on Nautilus. ³Optional.





18" Warm Alloy Painted Aluminum
NAUTILUS



18" Premium Painted Bright-Machined Aluminum
NAUTILUS SELECT



20" Premium Painted Bright-Machined Aluminum
NAUTILUS RESERVE



21" Premium Painted Ultra-Bright Machined Aluminum
NAUTILUS RESERVE Optional



20" Premium Painted Ultra-Bright Machined Aluminum
NAUTILUS SELECT Optional

