



**2016 LINCOLN MKS**

Vehicle content





19" Premium  
Luster Nickel-Painted Aluminum  
Standard

*{ WHEELS ADD THE  
FINISHING TOUCH }*

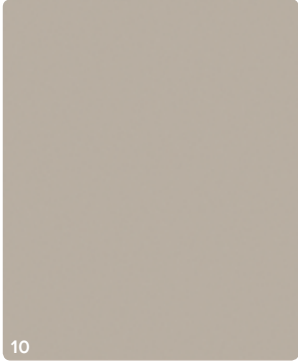
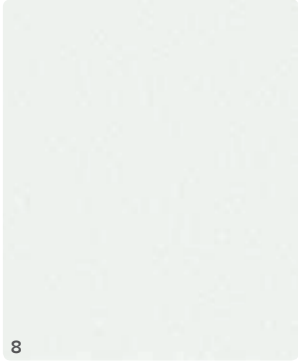
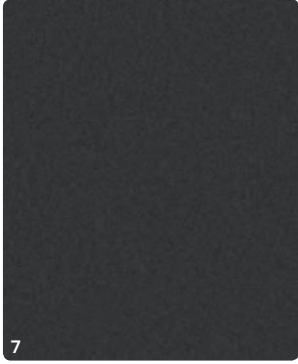
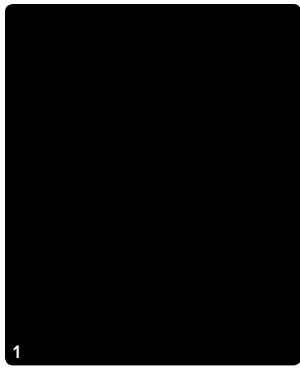


20" Polished Aluminum  
Standard on EcoBoost®



20" Premium Dark Stainless-Painted  
Aluminum with Chrome Inserts  
Available





1. Black Velvet  
6. Bronze Fire Metallic Tinted Clearcoat<sup>1</sup>

2. Ruby Red Metallic Tinted Clearcoat<sup>1</sup>  
7. Magnetic Metallic

3. Ingot Silver Metallic  
8. White Platinum Metallic Tri-coat<sup>1</sup>

4. Guard Metallic  
9. Luxe Metallic

5. Java Metallic  
10. Platinum Dune Metallic Tri-coat<sup>1</sup>

### Charcoal Black



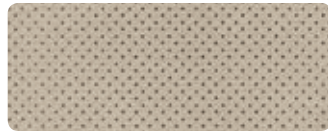
Charcoal Black Leather



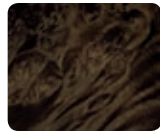
Brown Swirl Walnut Wood

Available with all exterior colors

### Light Dune



Light Dune Leather



Prussian Burl Wood

Available with all exterior colors

### Hazelnut



Hazelnut Leather



Prussian Burl Wood

Available with exterior colors 1, 3, 4, 5, 6, 8, 9, 10

**MKS**

**MKS with EcoBoost**

		<b>POWER AND HANDLING</b>
S		3.7L Ti-VCT 24-valve V6 engine 304 hp @ 6,500 rpm 279 lb.-ft. of torque @ 4,000 rpm EPA-estimated fuel economy rating <sup>1</sup> FWD 17 city/26 hwy/20 combined mpg (19.0-gal. capacity) AWD 17 city/24 hwy/19 combined mpg (19.0-gal. capacity)
S		3.5L EcoBoost® V6 twin-turbocharged, direct-injection engine 365 hp @ 5,500 rpm <sup>2</sup> 350 lb.-ft. of torque @ 3,500 rpm <sup>2</sup> EPA-estimated fuel economy rating <sup>1</sup> AWD 16 city/24 hwy/19 combined mpg (19.0-gal. capacity)
S	S	6-speed SelectShift® automatic transmission with paddle activation
S		Active Grille Shutters
S		Active noise control
S	S	Battery Management System
S	S	Brake- and engine-actuated traction control
S		Front-wheel drive (FWD)
O	S	Intelligent all-wheel drive (AWD)
S	S	Lincoln Drive Control with 3 drive modes (Comfort, Normal, Sport) featuring continuously controlled damping (CCD) and electric power-assisted steering (EPAS)
S	S	Power, ventilated disc brakes with Anti-Lock Brake System (ABS)
S	S	Torque Vectoring Control
		<b>EXTERIOR FEATURES</b>
S	S	Adaptive HID headlamps with auto high beams and autolamp on/off feature with delay
S	S	Dual exhaust with bright tips
S	S	Easy Fuel® capless fuel filler
S	S	Forward and Reverse Sensing Systems
S	S	Halogen projector-beam fog lamps
S	S	LED taillamps
S	S	Lincoln split-wing grille
S	S	Power, heated, body-color sideview mirrors with integrated blind spot mirrors, security approach lamps, memory and auto-dimming driver's side
S	S	Rain-sensing windshield wipers
S	S	Solar-tinted, laminated windshield and front-door glass
		<b>DRIVER CONTROLS</b>
S	S	Cruise control
S	S	Dual-zone electronic automatic temperature control
S	S	Intelligent Access with push-button start (2 key fob transmitters)
S	S	Power-tilt/-telescoping steering column
S	S	Remote Start System
S	S	SYNC® 3 with 8" color LCD touch screen in center stack with swiping capability, AppLink™, 911 Assist®, and 2 smart-charging USB ports
S	S	Universal garage door opener
		<b>AUDIO SYSTEMS</b>
S	S	Lincoln Premium Sound System with AM/FM stereo, single-CD player, MP3 capability and 10 speakers
S	S	SiriusXM® Satellite Radio with 6-month trial subscription

S = Standard O = Optional

**DIMENSIONS**

<b>LENGTH</b>	205.6"
<b>HEIGHT</b>	61.6"
<b>WHEELBASE</b>	112.9"
<b>WIDTH</b>	85.5" (including mirrors) 79.4" (mirrors folded)
<b>HEAD ROOM</b>	39.7" front/38.5" rear
<b>SHOULDER ROOM</b>	58.6" front/57.4" rear
<b>HIP ROOM</b>	55.3" front/55.3" rear
<b>LEG ROOM</b>	44.2" front (max.)/38.6" rear
<b>CARGO VOLUME</b>	19.2 cu. ft.
<b>PASSENGER VOLUME</b>	105.8 cu. ft.
<b>TOTAL INTERIOR VOLUME</b>	125.0 cu. ft.

<sup>1</sup>Actual mileage will vary. <sup>2</sup>Tested with 93-octane fuel.

Android is a trademark of Google Inc. Bridge of Weir is a trademark of Bridge of Weir Leather Company Limited. "HD Radio" and the HD Radio logo are proprietary trademarks of iBiquity Digital Corporation. iPhone is a trademark of Apple Inc., registered in the U.S. and other countries. SiriusXM services require a subscription, sold separately by SiriusXM after trial period. Fees and taxes apply. All fees and programming subject to change. Sirius satellite service is available only to those in the 48 contiguous USA, D.C. and PR (with coverage limitations). Our Internet radio service is available throughout our satellite service area and in AK and HI. Some channels not available in all lineups. Sirius, XM and all related marks and logos are trademarks of Sirius XM Radio Inc. THX and the THX logo are trademarks of THX Ltd., registered in the U.S. and other jurisdictions. All rights reserved.

**MKS**

**MKS with EcoBoost®**

INTERIOR FEATURES	
S	S 12-volt powerpoints (3)
O	O All-weather floor mats
S	S Ambient lighting
O	O Ash cup/coin holder with lighter element
S	S Auto-dimming rearview mirror
O	O Cargo organizer
O	O Dual-panel power moonroof with power sunshade
S	S Leather-wrapped steering wheel with genuine wood accent in brown swirl walnut or Prussian burl
S	S Power windows with global open/close and one-touch-up/-down
SEATING	
S	S 12-way power, heated and cooled driver and front-passenger seats with power lumbar and memory feature
S	S Bridge of Weir™ leather-trimmed seats
S	S Rear center armrest with pass-through and 2 cupholders
SAFETY AND SECURITY	
S	S Personal Safety System™ for driver and front passenger with dual-stage front airbags, <sup>1</sup> safety belt pretensioners, safety belt energy-management retractors, safety belt usage sensors, driver's seat position sensor, crash severity sensor, restraint control module and Front-Passenger Sensing System
S	S Front-seat side airbags <sup>1</sup>
S	S Safety Canopy® System with side-curtain airbags, <sup>1</sup> roll-fold technology and rollover sensor
S	S AdvanceTrac® electronic stability control with Curve Control
S	S Anti-theft perimeter alarm
S	S LATCH (Lower Anchors and Tether Anchors for Children)
S	S MyKey®
S	S Rear view camera
S	S SecuriCode™ invisible keypad
S	S SecuriLock® Passive Anti-Theft System
S	S SOS Post-Crash Alert System™
S	S Tire Pressure Monitoring System (excludes spare)
PACKAGES	
O	O Cold Weather Package: heated steering wheel and rear outboard seats (requires Elite Package)
O	O Elite Package: integrated SiriusXM Traffic and Travel Link® with 6-year subscription; voice-activated Navigation System with pinch-to-zoom capability and HD Radio™ Technology; BLIS® (Blind Spot Information System) with cross-traffic alert; <sup>2</sup> THX® II Certified Audio System with 16 speakers (including 10" subwoofer) and 14-channel amplifier with 700 watts of maximum power; 8-way power multicontour front seats with Active Motion®; power-adjustable pedals with memory; power rear sunshade; and wood appliqué in brown swirl walnut or Prussian burl on all doors, front center console and shifter surround
O	O Technology Package: adaptive cruise control and collision warning with brake support, active park assist, and Lane-Keeping System with Driver Alert System (requires Elite Package)

S = Standard O = Optional

**LINCOLN AUTOMOTIVE FINANCIAL SERVICES**

Whether you decide to purchase or lease, you'll find a plan designed to fit your individual needs. Visit [LincolnAFS.com](http://LincolnAFS.com) or your Lincoln Showroom to explore your financing options.

**LINCOLN EXTENDED SERVICE PLAN**

For a purchase or lease, Lincoln Extended Service Plan (ESP) gives you peace-of-mind protection designed to cover key vehicle components and protect you from the cost of unexpected repairs. Whether looking for additional mechanical, prepaid maintenance or tire protection plans, Lincoln ESP has you covered. Ask your dealer for Lincoln ESP, the only service contract backed by Lincoln and honored at all Lincoln dealerships in the U.S., Canada and Mexico.



Discover more at [Lincoln.com](http://Lincoln.com)

Comparisons based on competitive models (class is Luxury Full-Size Sedans based on Lincoln segmentation), publicly available information and Ford certification data at time of release. Vehicles may be shown with optional equipment. Features may be offered only in combination with other options or subject to additional ordering requirements/limitations. Dimensions shown may vary due to optional features and/or production variability. Information is provided on an "as is" basis and could include technical, typographical or other errors. Ford makes no warranties, representations, or guarantees of any kind, express or implied, including but not limited to, accuracy, currency, or completeness, the operation of the information, materials, content, availability, and products. Lincoln reserves the right to change product specifications, pricing and equipment at any time without incurring obligations. Your Lincoln Dealer is the best source of the most up-to-date information on Lincoln vehicles.

©2015 Lincoln 16MKSPDFSPEC

<sup>1</sup>Always wear your safety belt and secure children in the rear seat. <sup>2</sup>BLIS replaces standard integrated blind spot mirrors.



**ELECTRONICS**

- Remote start systems
- Vehicle Security System

**EXTERIOR**

- Full vehicle cover by Covercraft®<sup>1</sup>
- Locking fuel plug
- Moonroof deflector
- Side window deflectors
- Splash guards
- Wheel lock kit

**INTERIOR**

- All-weather and premium carpeted floor mats
- Ash cup/coin holder with or without lighter element
- Cargo area protector
- Cargo organizer
- First aid kit by DC Safety®<sup>1</sup>
- Roadside assistance kit by DC Safety<sup>1</sup>
- Soft cargo cooler bag
- Soft cargo organizers (large and standard sizes)
- Sport pedals
- Tablet cradle by Lumen®<sup>1</sup>



Visit [accessories.lincoln.com](http://accessories.lincoln.com) to shop the complete collection.

Lincoln Original Accessories will be warranted for whichever provides you the greatest benefit: 24 months/unlimited mileage, or the remainder of your Bumper-to-Bumper 4-year/50,000-mile New Vehicle Limited Warranty. Lincoln Licensed Accessories (LLA) are warranted by the accessory manufacturer's warranty. LLA are designed and developed by the accessory manufacturer and have not been designed or tested to Ford Motor Company engineering requirements. Contact your Lincoln Dealer for details and/or a copy of all limited warranties.

# THE LINCOLN PLEDGE

It's the collective promise of everyone at the Lincoln Motor Company – from our trusted service advisors and expert technicians, to the voice on the other end of the line should you call – that we'll be there for you and your Lincoln wherever, whenever, if ever, you need us.

## LINCOLN LIMITED WARRANTIES<sup>2</sup>

You can rest assured with a 4-year/50,000-mile Bumper-to-Bumper Warranty that covers repair, replacement or adjustment of parts at no additional cost, as well as a 6-year/70,000-mile Powertrain Warranty which features no deductible and is fully transferable.

## LINCOLN COMPLIMENTARY MAINTENANCE<sup>3</sup>

We are pleased to offer complimentary maintenance for 2 years/24,000 miles. At no charge to you, your maintenance visits will include an oil and filter change, and tire rotation, scheduled to accommodate your busy life.

## LINCOLN ROADSIDE ASSISTANCE FOR LIFE<sup>3</sup>

Help is only a phone call away, should you run out of fuel, lock yourself out of the vehicle, or need towing to the closest Lincoln dealership – or to your preferred Lincoln dealership within 100 miles. For the original owner, the Lincoln Roadside Assistance program provides these services 24/7 for as long as you own the vehicle – at no charge.

## COMPLIMENTARY CAR WASH<sup>4</sup>

At the completion of any service on your Lincoln, drive away from the dealership in a clean vehicle that looks just as beautiful as the day you bought it. It's just another shining example of our commitment to you.

## COURTESY VEHICLE<sup>4</sup>

Should your Lincoln require warranty service, you can count on us to be there for you with a courtesy vehicle. It's just one more way to let you know that we'll be here for you.

## SERVICE PARTS WARRANTY

We'll stand behind our service – and you – with a 2-year, unlimited-mile warranty on both parts and labor.

## MYLINCOLN MOBILE APP

Available through a free download to your iPhone® or Android™ device, the MyLincoln™ Mobile app provides easy access to Roadside Assistance, your Lincoln Concierge and other premium Lincoln owner services.

## LINCOLN CONCIERGE

As the owner of a Lincoln, you can take comfort in knowing that we're always by your side. Our caring agents are empowered to handle your concerns – no matter how big or small they may seem.

Lincoln Concierge and Roadside Assistance  
(800) 521-4140

TDD (hearing impaired)  
(800) 232-5952



<sup>1</sup>Lincoln Licensed Accessory. <sup>2</sup>Lincoln reserves the right to change program details at any time without obligations. See your dealer for limited warranty details. <sup>3</sup>Lincoln reserves the right to change program details at any time without obligations. See Service Advisor for complete details. <sup>4</sup>Availability depends on dealership participation. See dealer for details.